

Galley kitchens had a bad rap for a while. But, in narrow spaces they make sense — so long as you've got natural light. The eight- by eight-foot sliding glass door was the largest I could get without going custom. It makes the kitchen feel like a garden oasis. *Pendant, The Door Store.*



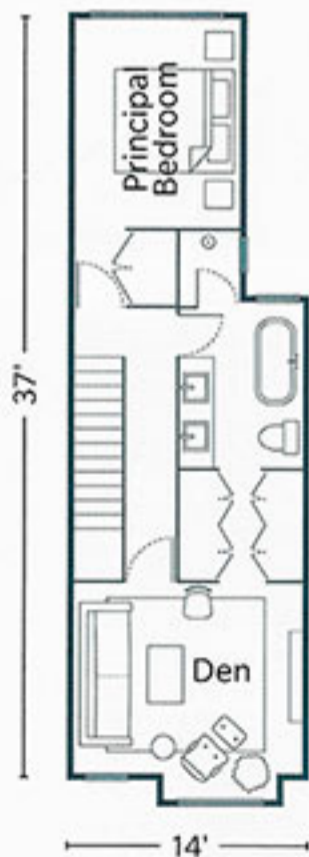
25 different toilets alone!) Knowing the finished kitchen would only be nine feet wide, I designed the layout without an island, instead carving out room for a breakfast nook that now doubles as Andrew's workstation. Admittedly, I became a bit obsessed with configuring our electrical. I had the kitchen outlets installed horizontally for a more European look, the switches installed a foot lower than usual to be more discreet, and connected all of our fixtures to dimmers. Being able to turn every light on and off (including all lamps) from the same set of switches is so satisfying.

### Late Summer 2016: FINE-TUNING OUR STYLE

When you're constantly seeing what's new and next, it's impossible not to be inspired by the latest trends. Yet, when it came to choosing more permanent items like floors, cabinetry and countertops, Andrew and I wanted things that were timeless — but still felt fresh. *H&H* senior design editor Stacey Smithers gave me great advice: she told me to consider the things we've liked the longest. That way, the chances were good that we'd continue to like them for years to come.

CONTINUED ON PAGE 120

### First Floor



### Second Floor

Andrew and I didn't want our main floor powder room to open onto the kitchen or living room, so I designed a pantry hallway between the two spaces. *Cabinetry, AyA Kitchens and Baths; hardware, Lee Valley; lidded canister, Hollace Cluny.*



I designed a banquette with Queen Anne-style legs and green velvet upholstery to add colour to the kitchen. I've borrowed paintings by Gordon Runge for photo shoots for years, so it was an exciting day when I hung one of his pieces in my own place. *Banquette fabric, Romo; artwork, Burnett.*



**TOP RIGHT:** The trimless window above our farmhouse sink has a beefy bottom ledge that I seem to restyle every other week! Glass-fronted upper cabinetry houses a collection of my grandma's dinnerware. *Hardware, Lee Valley; sink, faucet, DXV; blind fabric, Robert Allen.*  
**BOTTOM RIGHT:** Maintenance-free artificial turf keeps our backyard looking green all year long. A new pressure-treated wood deck gives us room for alfresco dining. *Artificial turf, Design Turf; outdoor dining set, The Home Depot; striped throw pillow, Tonic Living.*  
**BOTTOM LEFT:** Making a strong statement with dark cabinetry and black stainless steel appliances led me to design a very minimal vent hood that disappears into the wall. *Cabinetry, AyA Kitchens and Baths; appliances, KitchenAid.*